

Hillsdale Environmental Loss Prevention Intermodal Water Issues Presentation

Main Issues

1. Proximity of proposed intermodal site to existing tributaries of Hillsdale Lake.
2. Possible contamination of streams & lake from catastrophic diesel spill.
3. Contamination of streams & lake from diesel exhaust particulate matter.
4. Impact of 492 acres of pavement on flooding of big bull tributary.
5. Contamination from grease, fuel, tire particle matter and daily operations.

Location of Proposed Intermodal Site

The following map shows the proximity of Gardner High School and Middle School $\frac{3}{4}$ miles from intermodal boundary.

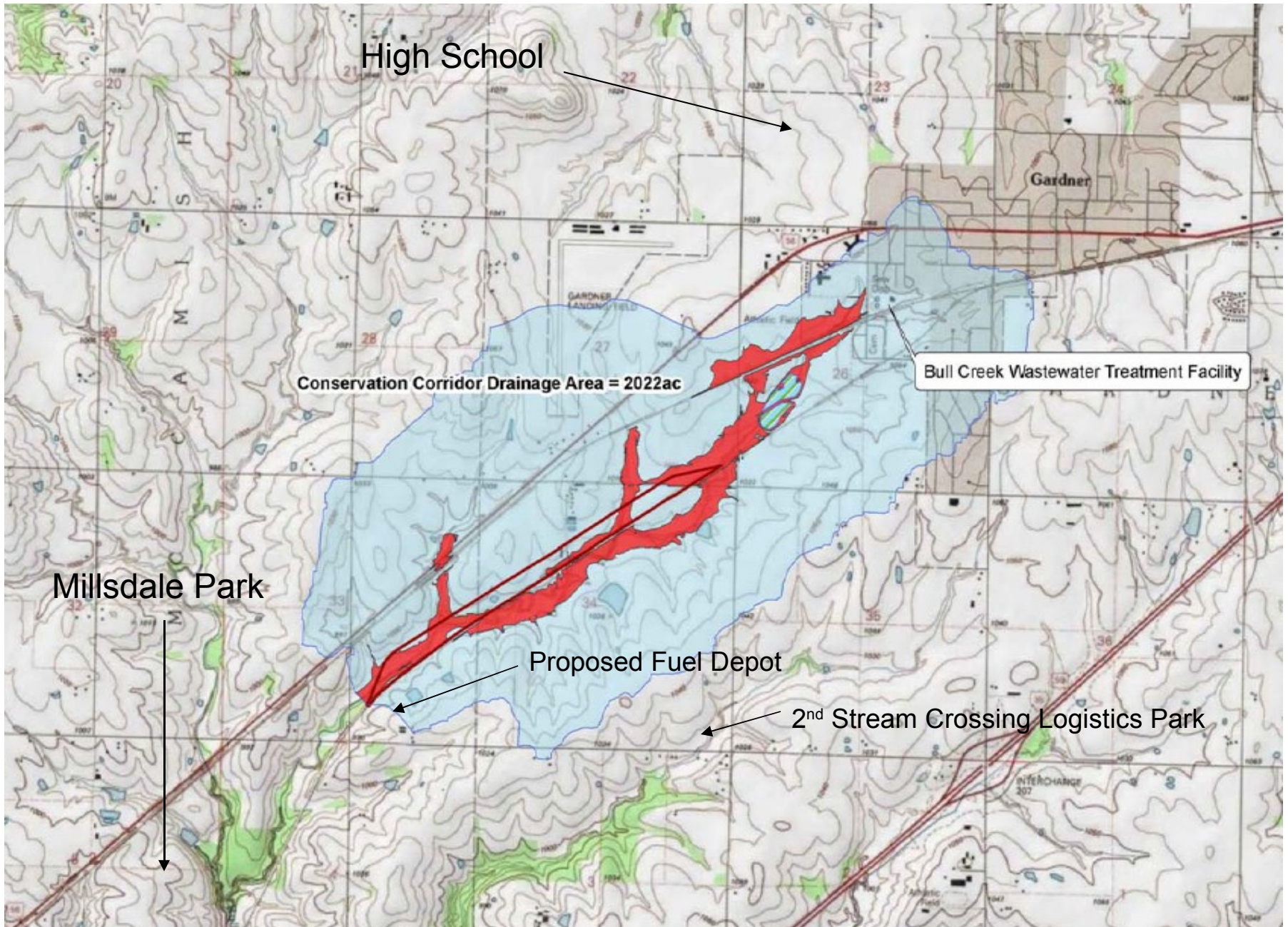
Fueling depot adjacent to tributary stream.

Hillsdale Lake 4 miles from intermodal site.

homes within 1 mile of site.

2nd stream crossing logistics park triangle.

Millsdale Park adjacent to intermodal site.



High School

Gardner

Conservation Corridor Drainage Area = 2022ac

Bull Creek Wastewater Treatment Facility

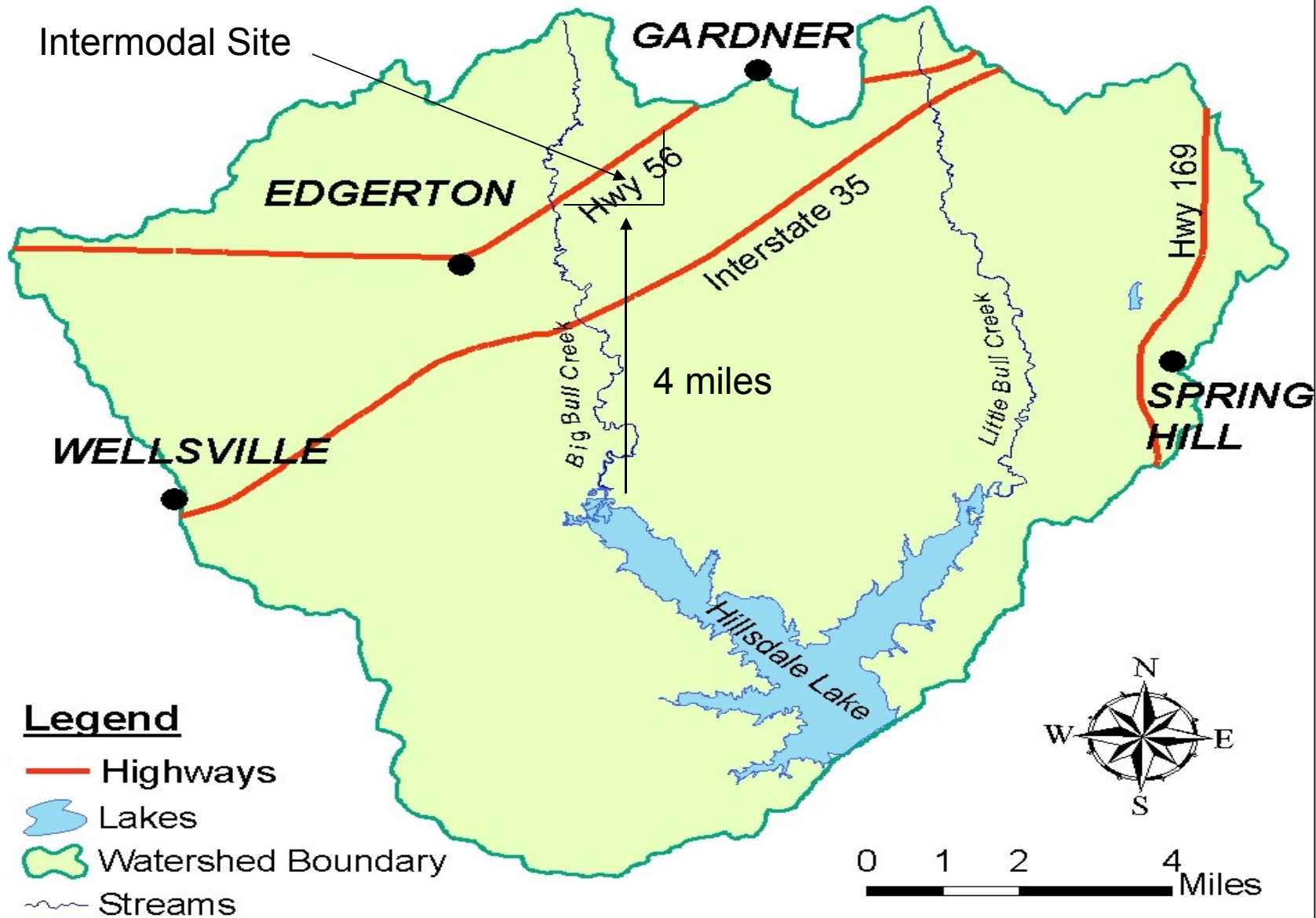
Millsdale Park

Proposed Fuel Depot

2nd Stream Crossing Logistics Park

INTERCHANGE
207

Hillsdale Lake Watershed Area



Possible contamination from catastrophic diesel spill

Proposed diesel fueling station at southwest corner of site.

Lawsuits by the states of Washington, Montana, Idaho, North Dakota and others against BNSF for diesel spills at fueling depots shows the very real possibility of a catastrophic spill at the Gardner Intermodal facility.

An emergency plan for a large spill would be addressed more thoroughly in a full environmental impact study.

As submitted there are no provisions for spill containment
To prevent contamination to Big Bull Creek.

BNSF seen ready to buy befouled neighborhood LIVINGSTON, Mt. -- The Bozeman Daily Chronicle reported that the BNSF Railway, responsible for **diesel pollution** here, plans to buy most of a neighborhood that is over a **plume of contaminated groundwater**, according to this Associated Press report published by the Billings Gazette.

Cleanup underway after diesel spill in Memphis

Hazmat crews along with the Memphis Fire Department were called to a **diesel spill** at the **Burlington Northern** train yard about 11:00 Tuesday night (Dec. 19), according to the MyEyewitnessNews.com Web site. **Officials say more than 2800 gallons of diesel fuel spilled out of a rail car.**

Officials vent frustrations over BNSF fuel leak COEUR D'ALENE, Idaho -- Upset Kootenai County officials met with executives from the railroad responsible for a recent wastewater and diesel spill over the Rathdrum-Spokane Valley Aquifer, according to the Associated Press.

BNSF diesel spill lawsuit goes to jury GRAND FORKS, N.D. - Jurors here are considering whether the Burlington Northern Santa Fe railroad is responsible for a **decades-old underground diesel spill in Mandan**, and whether about 70 residents of that city should be compensated for **health problems** and property damage, according to the Associated

Tuesday, August 4, 2009

State wants depot shut down

DEQ seeks emergency court order; BNSF insists latest leak contained

Citing an "immediate and substantial danger to public health and the environment," the state of Idaho sought an emergency court order Tuesday to shut down BNSF Railway's refueling depot in Hauser, Idaho.

Flurry of lawsuits as companies try to pin blame in BNSF depot leak

RATHDRUM, Idaho -- The Burlington Northern Santa Fe Railroad is trying to get companies that built a leaky northern Idaho refueling depot to reimburse it \$18 Million.

That's after the railroad was forced by the state to shutter the Rathdrum depot for 74 days and make repairs to prevent fuel-tainted wastewater from leaking into an underground aquifer.

N.J. may penalize railroad over oil spill into river

RIDGEFIELD PARK, N.J. -- The state is considering penalties against a rail operator here for a fuel oil spill that dumped as much as 1,000 gallons into the Hackensack River last year.

Contamination of streams & lake from diesel exhaust particulate matter.

Per air quality study done by Environ Corp. Submitted to A.C.E. by BNSF 119 tons of NOx, 16 tons of VOC's, and nearly 6 tons of particulate matter will be released into the air from the Intermodal site itself. This matter will rise approximately 30-150 feet and will be deposited onto surrounding land and streams where it will wash into Hillsdale Lake Untreated

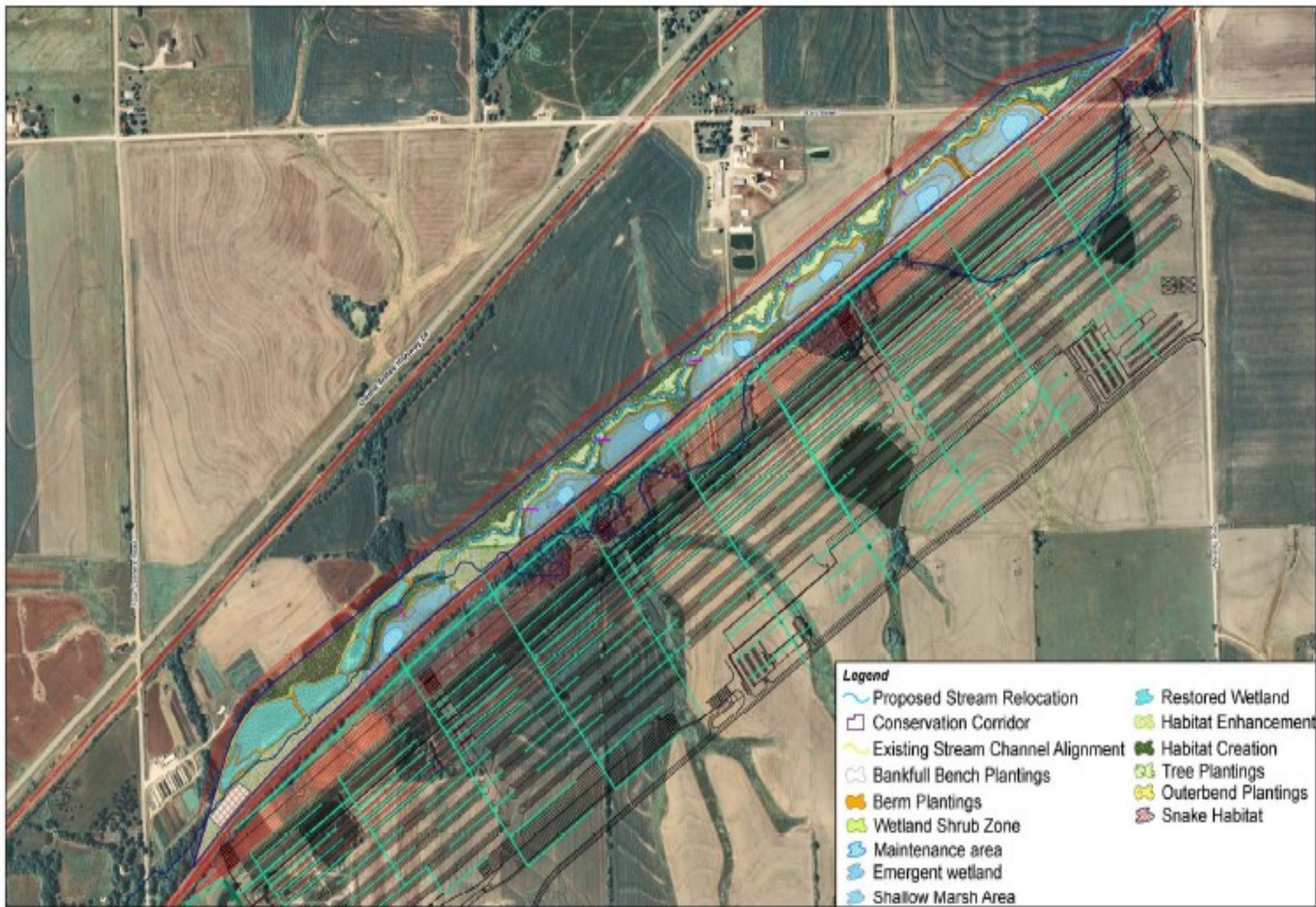
Summary Table 1. Argentine on-site 2010 emissions (metric tonnes) without growth.

Source	TOG	VOC	THC	CO	NOx	PM	SOx
Setout Line-Haul	2.08	2.05	1.94	2.78	20.31	0.64	0.24
Originating Line-Haul	1.44	1.42	1.35	1.71	11.06	0.38	0.12
Line-Haul used in Switching	0.09	0.09	0.09	0.12	1.02	0.03	0.01
Switching	0.82	0.81	0.77	2.93	17.16	0.38	0.18
Cargo handling equipment	7.40	7.30	6.99	119.78	51.78	4.09	0.004
Other non-road equipment	1.28	1.27	1.23	31.01	1.21	0.03	0.01
On-road container trucks	0.90	0.84	0.85	4.71	8.62	0.24	0.02
Transport Refrigeration Units	0.03	0.03	0.03	0.15	0.43	0.03	0.08
Fleet Vehicles on-site	1.02	0.97	1.01	8.25	0.89	0.03	0
Total (tonnes)	15.06	14.78	14.26	171.44	112.48	5.85	0.66
Total (tons)	16.60	16.29	15.72	188.98	123.99	6.45	0.73
Off-site truck movements (tonnes)	0.24	0.23	0.23	1.01	3.65	0.12	0.01

Impact of 492 acres of pavement on flooding of big bull tributary.

Proposed site plan calls for all of the intermodal to be paved with exception of the conservation corridor which is nothing more than a huge stormdrain diverting all rainfall directly into Big bull creek untreated and then straight to Hillsdale Lake. This problem is doubled with the build out of the Logistics Park as another 500 acres will be paved and a good portion of that storm water will flow into the 2nd stream crossing the corner at 191st and Waverly Rd. Presently there is no set plan for mitigated storm water runoff into Gardners storm water system.

A 1" rain on the intermodal site itself equals approx 13,358,980 gallons.

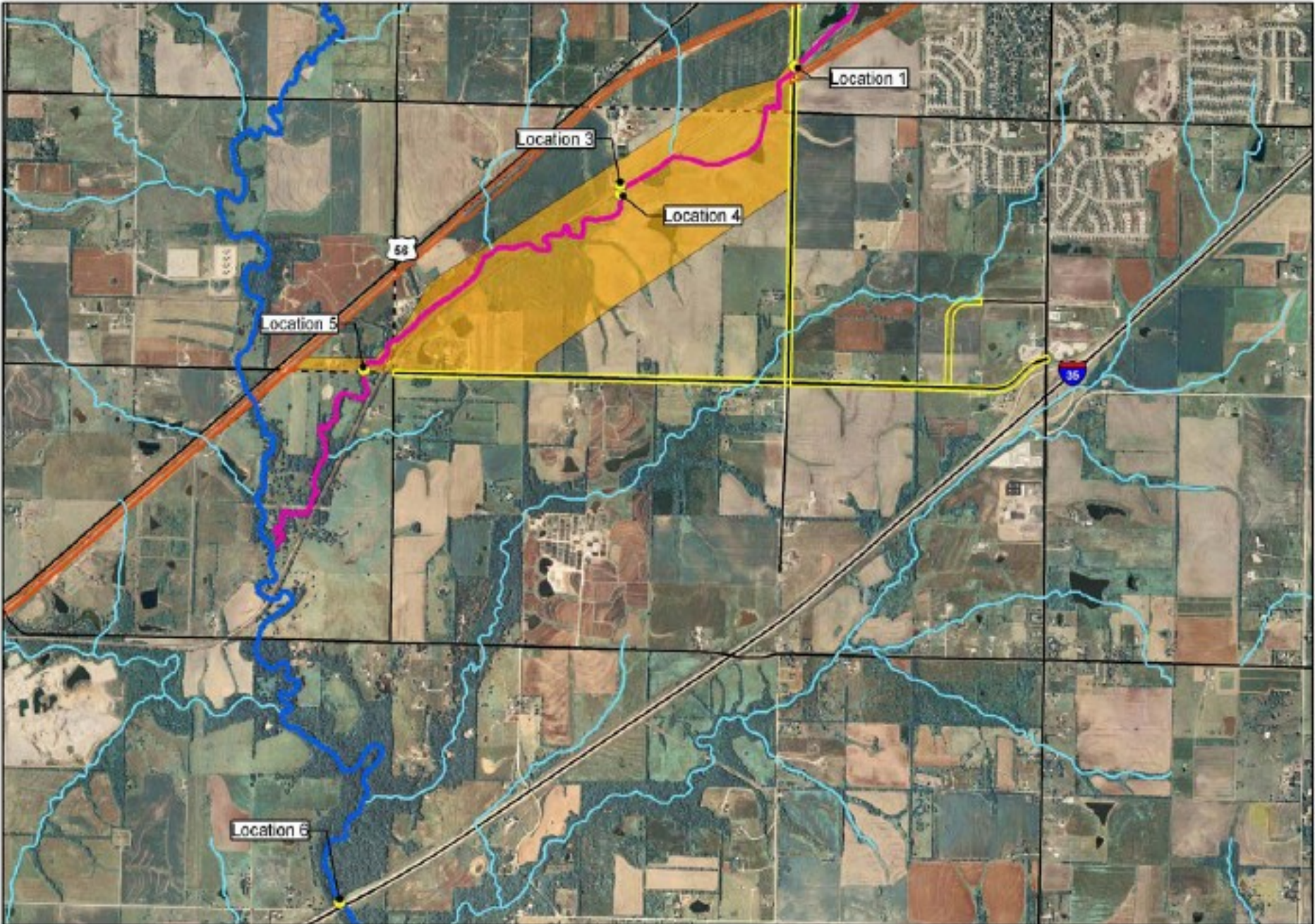


Contamination from grease, fuel, tire particle matter and daily operations.

Highly toxic waste materials will be produced daily at the intermodal site. The present design calls for 7 settlement ponds intended to catch runoff mixed with with daily operations waste and through gravity filter out the hazardous materials and then flow into the creek and Hillsdale Lake.

There are no mitigation plans for the storm water/daily waste runoff from the Logistics Park, most of which will hit the 2nd stream.

This means and businesses can spill any hazardous Material and it will head directly to Hillsdale Lake.



Location 1

Location 3

Location 4

Location 5

Location 6

58

35